



# VOLCANO

HEATING UNIT

2023



[www.vtsgroup.com](http://www.vtsgroup.com)

## Controls



PARAMETERS Model	Wall controller WING/VOLCANO	VR Thermostat	Speed regulator ARW 3.0/2	Speed regulator ARW 0.6	Potentiometer VR EC (0-10V)	Potentiometer with thermostat VR EC (0-10V)	HMI VOLCANO EC controller	HMI VOLCANO EC WIFI controller
VTS product number	1-4-0101-0438	1-4-0101-0038	1-4-0101-0434	1-4-0101-0167	1-4-0101-0453	1-4-0101-0473	1-4-2801-0157	1-4-2801-0158
Motor support	AC				EC			
Power supply voltage V/ph/Hz	~230/1/50	~230/1/50	~230/1/50	~230/1/50	~230/1/50	~230/1/50	~230/1/50	~230/1/50
Permissible load current A	6(3)	3	3	0,6	0,02 A for 0-10V		1A for 230VAC 0,02A for 0-10V	1A for 230VAC 0,02A for 0-10V
Settings range °C	10...30	10...30	10...30	10...30	-	5...30	5...40	5...40
Work mode	---	manual	manual	manual	manual	manual	manual/automatic	manual/automatic
Hourly-weekly calendar	---	No	No	No	No	No	Yes	Yes
Clock	---	No	No	No	No	No	Yes	Yes
Temperature measurement	Integrated in the device		No		No		Integrated in the device	
The possibility of connecting a separate temperature sensor pcs.	---		No		No		1 or 4	
Output signal	---				on/off			
Protection rate IP	30		54		30		20	

### COOPERATION OF CONTROLS AND REGULATORS WITH HEATING UNITS

VR Mini/ VR Mini 3/ VR-D Mini	pcs.	4	1	4	1	8
VR1/ VR2	pcs.	2	1	1	0	8
VR3/ VR4/ VR-D	pcs.	1	1	1	0	8

## Accessories



Valve with actuator

VTS article No.	1-2-1204-2019
power supply voltage	~230V/1ph /50Hz
power consumption electrical	1 W
connection	3/4"
Coefficient of Volume	4,5 m³/h
opening/ closing time	3/3 min.
protection rating	IP 54



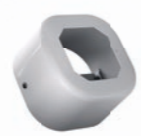
Room NTC sensor

VTS article No.	1-2-1205-0007
resistance measurement element	NTC 10K kΩ
assembly	surface-mounted
max. signal wire length	100 m
ambient	-20...+70°C
protection rating	-20...+70°C
stopień ochrony	IP 66



Flex. connecting hoses (set)

VTS article No.	1-2-2702-0076
length	0,6-0,9 m
connection type	GW 3/4"
max. fluid pressure	1,6 MPa
min. working temperature for water	5°C
min. working temperature for glycol	-20°C
max. working temperature	130°C
set includes	hose (2 pcs) gasket (4 pcs)



Surface mounted box for HMI

VTS article No.	1-2-0393-1987
dimensions	100x100x70mm
type	surface mounted
color	RAL 9016
set includes	bracket and 2 screws



Drain pan for VR Mini - VR Mini 3

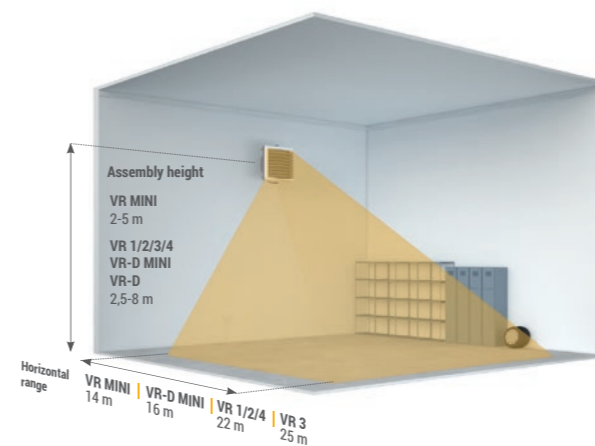
VTS article No.	1-2-2701-4021
dimensions	532x145x43 mm

Drain pan for VR1-4

VTS article No.	1-2-2701-4019
dimensions	702x145x43

## Assembly

### ASSEMBLY WALL



### ASSEMBLY CEILING

